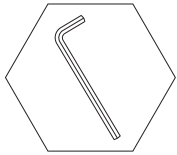


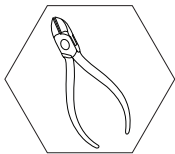
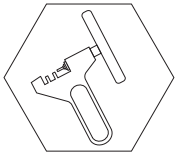
EASY ADJUST KIT FITTING INSTRUCTIONS

(ADVENTURE/SPRINT)

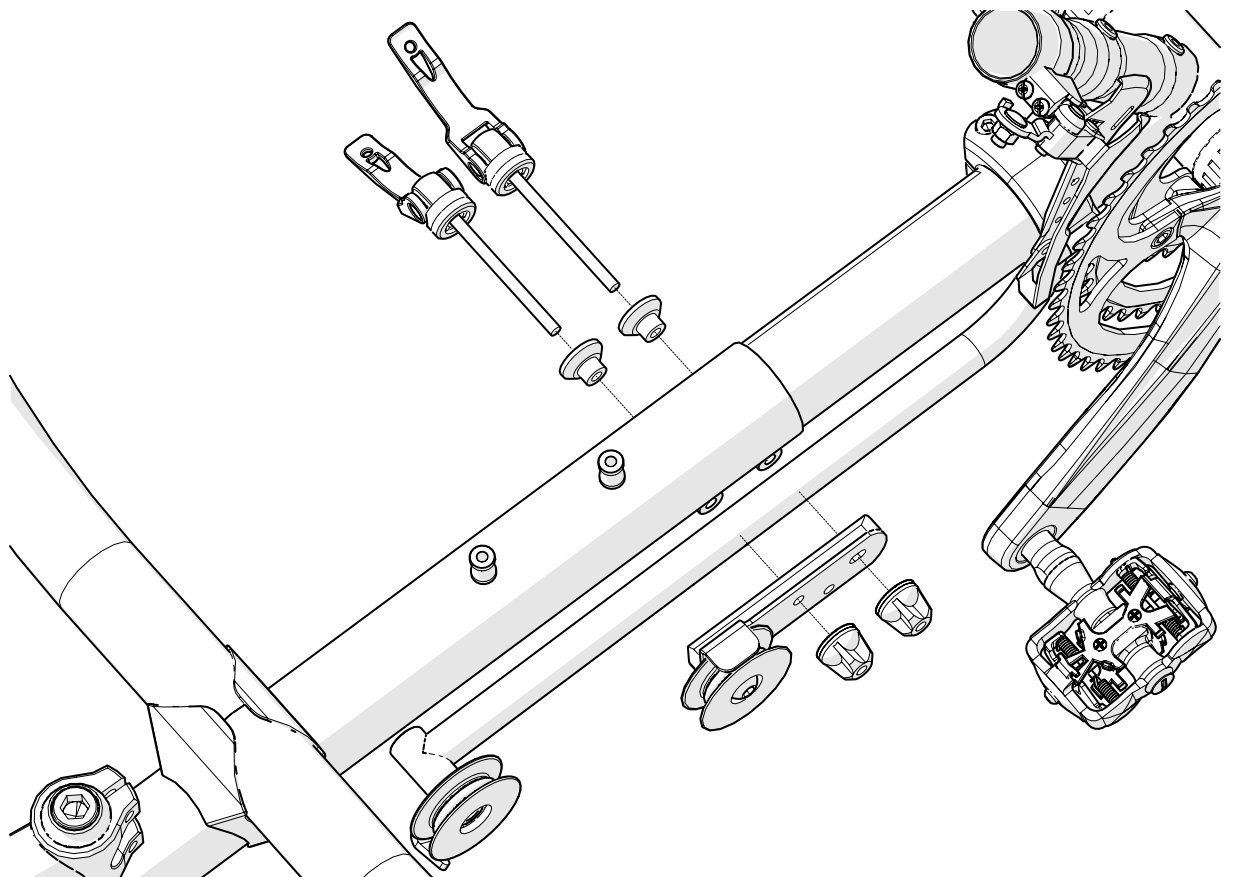
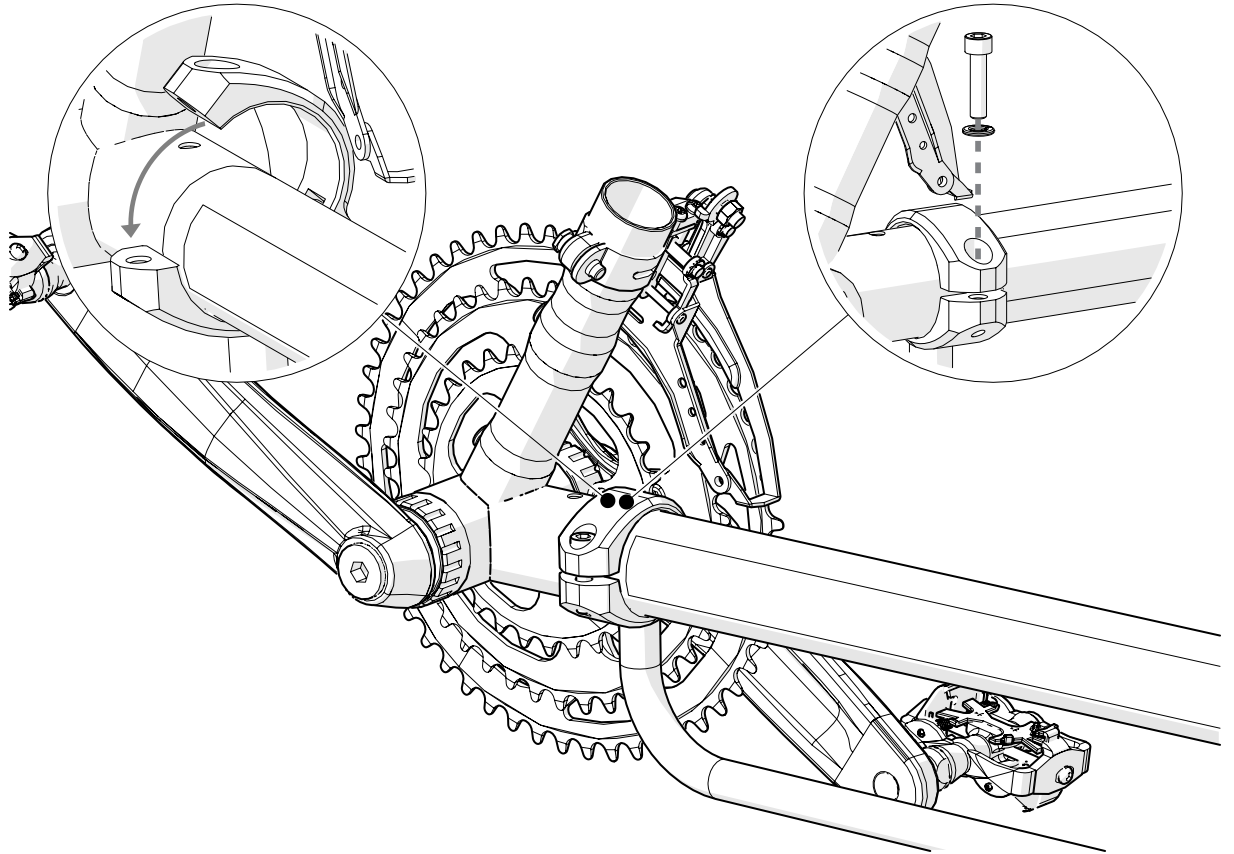
TOOLS



5mm

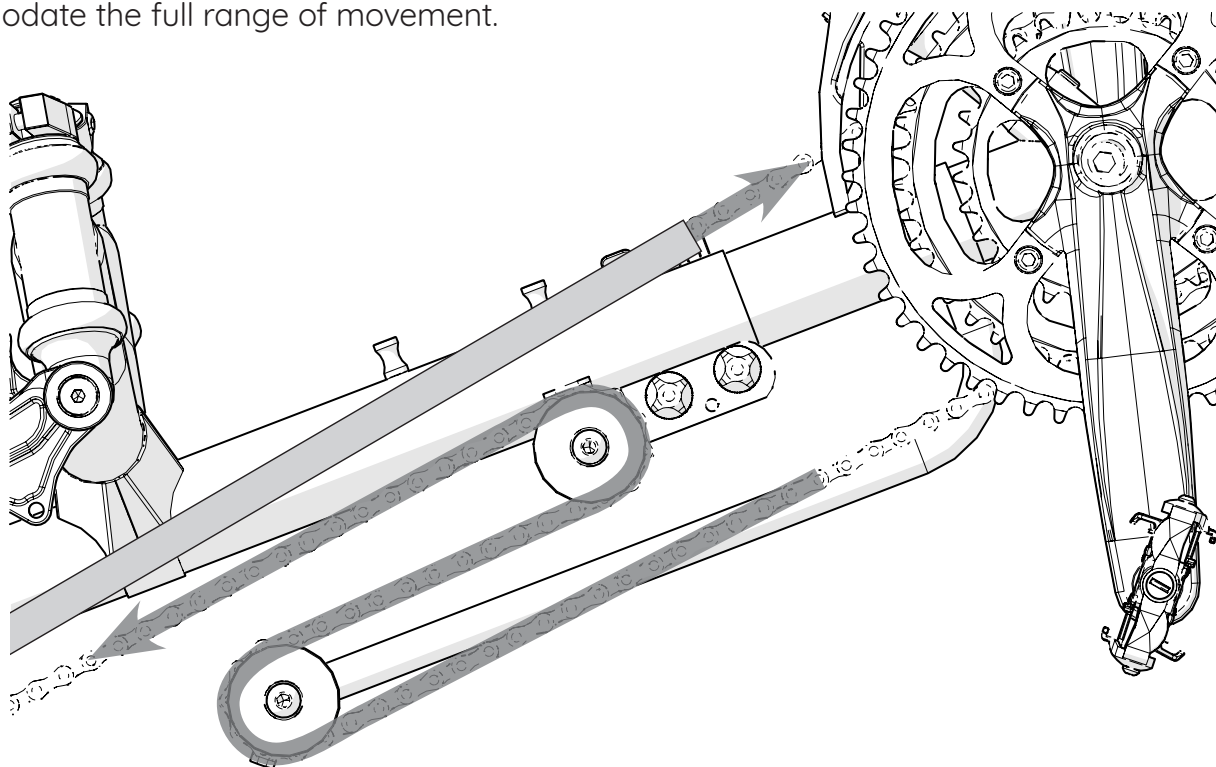


If you are retrofitting your Easy Adjust Kit and not adding it to a new trike, remove the chain before continuing. You may also need to replace the front derailleur gear cable inner and outer, depending on how short it has been previously cut. The gear cable must be long enough to allow the boom to be fully extended.



If you are retrofitting the Easy Adjust Kit then you may need to add additional chain, which is not supplied in this kit.

Depending on the amount of adjustment required, the top chain tube may need to be cut to accommodate the full range of movement.



Adjust the chain to new routing and check length as outlined in the assembly manual.

Fit the gear cable guide tube by pushing it over the gear cable housing (it has a split in it to allow for easy fitment) and secure it using cable ties. The gear cable out should be able to move freely as the boom is adjusted .

