

TerraCycle Battery Mount ICE Rigid Rear Trikes Installation and Adjustment Instructions

Introduction

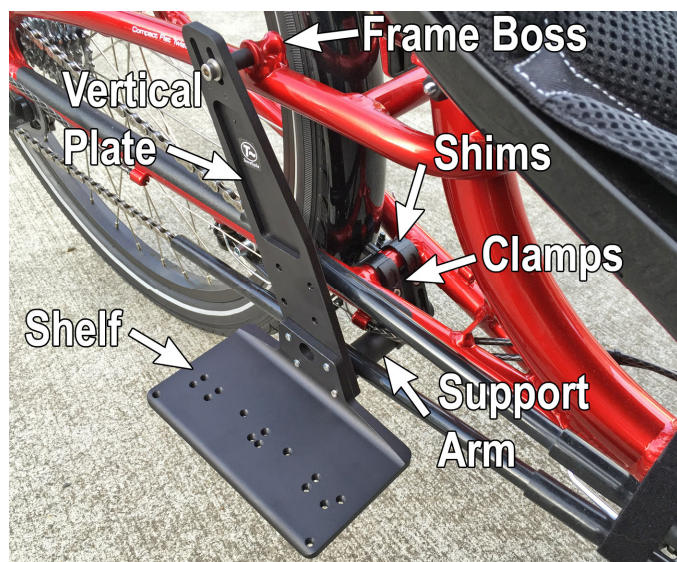
This Battery Mount is designed for use on ICE trikes with 20 or 26 inch rigid (unsuspended) rear wheels.

Tools Required

You will need 4mm and 6mm Allen (hex) wrenches.

Installation

Installation involves installing two clamps, inserting the mount into the clamps, and attaching a bolt to the rack mount frame boss.

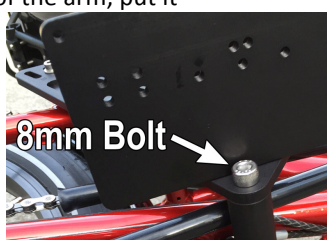


1. **Install the plastic shims** onto the fender support tube near the front of the rear tire. To install, spread the rings open and snap them over the tube, one on each side.

2. **Position the clamps onto the shims.** Remove one bolt from the clamp, and loosen the other. Spread the clamp open and slide it onto the shim. Be careful to position the bolt heads on the clamps as shown, to ensure you will be able to reach them with the wrench. Repeat with the second clamp.



3. **Attach the battery shelf as shown.** Align the battery shelf with the plate and install the 6mm button head bolts through the plate and into the shelf. Tighten firmly.
4. **Attach the support arm to the main plate as shown.** Unscrew the 8mm bolt from the end of the arm, put it through the plate, and screw it back into the arm. Tighten it firmly.
5. **Insert the support arm into the clamps.** Spread the clamps open, and slide the support arm through the clamps.



6. **Attach the top of the Battery Mount to the rack frame boss.** If you have a 20 inch rear wheel, use the slot marked "20". If you have a 26 inch rear wheel, use the slot marked "26". Put the 5mm bolt provided through the slot, through the spacer, and then thread it into the frame boss.
7. **Adjust the positioning, then tighten everything.** Tighten the bolt in the slot so the vertical plate lines up with the frame boss. The bottom of the plate may need to move sideways to do this, so make sure the clamps allow this to happen. When the plate is lined up vertically to the frame boss, adjust the bottom of the mount forward and back slightly to angle the battery plate as desired. It should be approximately level to slightly angled downwards at the front.

When the shelf is at the desired angle, check that the clamps are positioned over the shims, then tighten the bolts on the clamps. Tighten each bolt, then go back and double check each bolt, as tightening one will take some of the load off the other.

Double check the tightness of the upper bolt as well.

8. **Install the battery.** There are multiple M5 threaded holes in the plate for attaching different types of batteries. We make spacer kits for the BionX downtube and NeoDrive batteries, and adapter plates for the BionX type R (rear rack) and Falco batteries.

That's it! May you enjoy years and years of riding with your securely mounted battery!

