

REQUIRED TOOLS FOR ASSEMBLY AND MAINTENANCE

- 5mm hex wrench
- T25 Torx wrench
- Cable housing cutters
- Cable cutters

SAFETY WARNINGS & PRODUCT INFORMATION

WARNING - This braking system was designed for use on a single rider bicycle. Use of this system on any other vehicle or apparatus will void the warranty, possibly causing you great personal harm or injury.

WARNING - Disc brakes, calipers, and rotors get VERY HOT during regular use. DO NOT touch or attempt to service the rotor or caliper assembly until you've allowed for sufficient cooling to occur.

WARNING - This disc brakes offer a significant increase in performance over other traditional cable actuated systems. Follow the break-in recommendations listed in this manual, allow yourself to learn and become accustomed to the braking characteristics.

WARNING - If your bike is involved in a fall or crash fully check the brake function including: making Sure the lever, caliper, and rotor are securely attached to the bike, pads are correctly installed and functioning, the cable is operating smoothly and the lever feels firm when actuating the brake. Always have a qualified mechanic check the brakes if you have any doubts.

WARNING - Pad thickness must be at least 0.8mm. Confirm this before each ride. Keep pads clean and free of oil or hydraulic fluid. If pads become contaminated discard them and Replace immediately.

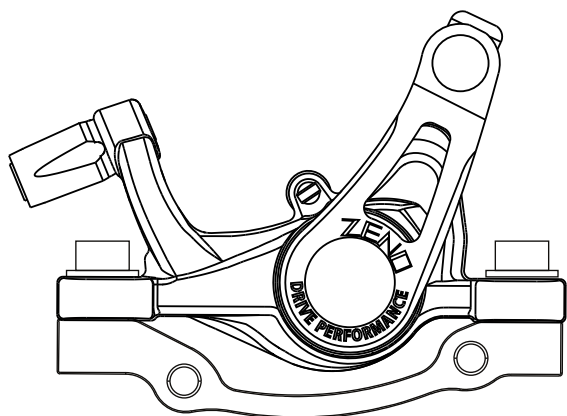
WARNING - Ensure that cable housing is always secured to the frame and/or fork prior to every ride. Do not ride bike on which the cable housing can come into contact with the tires!

CAUTION - Read this manual completely before attempting to install or work on your ZENO Brake. If you are unfamiliar with any element of assembly or maintenance please consult a qualified mechanic for assistance

CAUTION - Cleanliness is very important part of any maintenance of a disc brake. If the pads or rotor become contaminated with oil, or if the system becomes contaminated with impurities, braking performance will be greatly impaired .

Adapter installation

SPEED CLIP With IS Mount Adapter



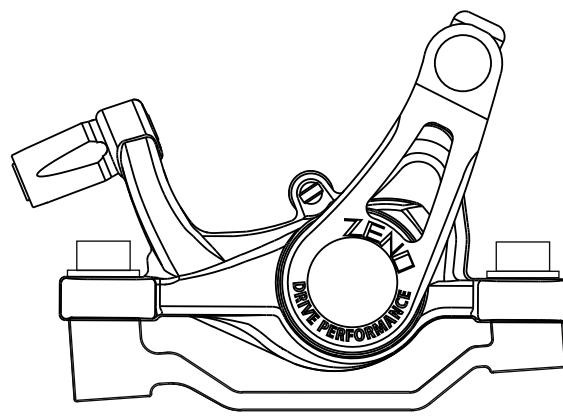
All ZENO adapters have "UP" mark. Please Confirm the "UP" mark is oriented upwards, or furthest from the hub axle.

Torque spec:

Mounting bolts: 6-8 Nm (43-71 in-lb)

Disc Rotor bolts: 4-6 Nm (35-53 in-lb)

SPEED CLIP With PM Mount Adapter



All ZENO adapters have "UP" mark. Please confirm the "UP" mark is oriented upwards, or furthest from the hub axle.

Torque spec:

Mounting bolts: 6-8 Nm (43-71 in-lb)

Disc Rotor bolts: 4-6 Nm (35-53 in-lb)

Cable Installation

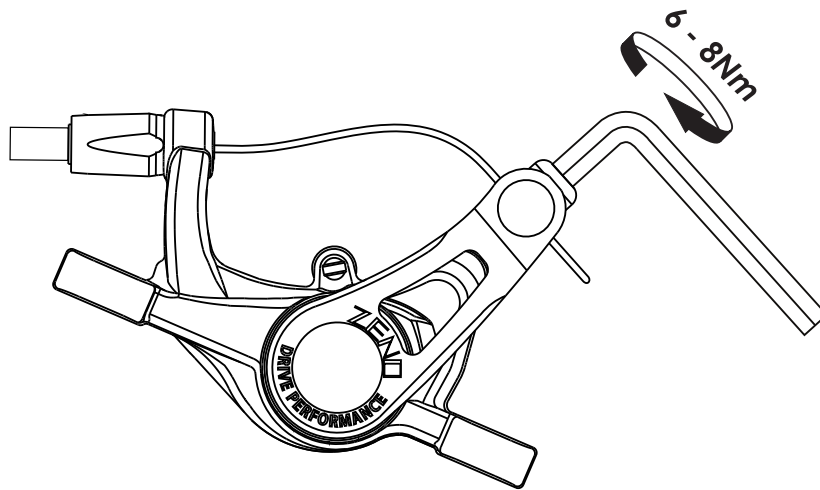
- Compression-less housing is recommended for Speed Clip Mechanical Disc Brake to yield the best performance. (ZENO cable set is recommended) Sealed ferrules or other sealing systems are not recommended as they may create excess friction and affect the brake lever return performance. Route Your brake housing to minimize tight bends and acute angles.

For Road bike Handle bar setup

- We recommend to install a small section of spiral wound housing that inserts into the brake lever body and runs inside or outside the first bend in the bar. (Not all brake lever bodies need a ferrule installed – check your brake lever's Technical manual to decide if a ferrule is needed.) The ends should be filed flat and the liner should be open to eliminate friction. Install a double-ended ferrule.
 - Note: Spiral wound housing can be cut to accommodate bar width and preferences, such as hiding the double end ferrule under bar wrap. Allow spiral wound housing to extend at least 25mm (1 inch) beyond the handle bar end.
 - Install the compression-less housing on the remainder of the frame or fork. Cut accurately to minimize tight bends and acute angles to optimize the brake lever feel.

Connecting the Brake

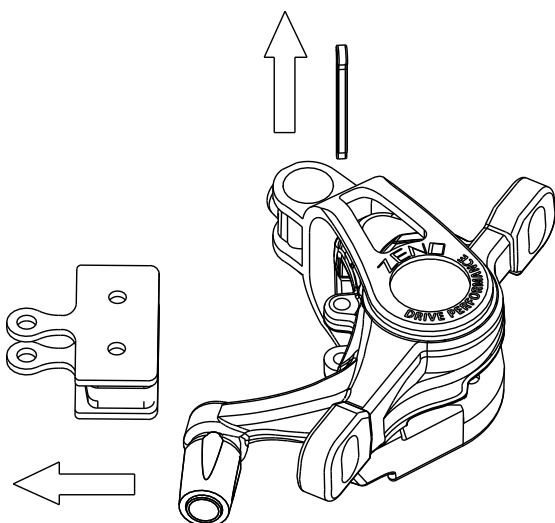
- Turn barrel adjuster so that it is fully threaded in. Install ferrule on end of compression-less housing to fit in barrel adjuster.
- Run the cable through and attach to brake's actuation arm. Confirm cable is tightened well in the fixing plate groove. Pull cable tightly, but do not preload brake. (see the picture A)
- To align the caliper, reattach the wheel, pull the brake lever firmly to self-align the caliper on the rotor and tighten the caliper mounting bolts 6 - 8 Nm.
- Release the lever and check that the pads are aligned equally and that the wheel spins freely. The barrel adjuster may be used to take out cable slack.
- Pull brake lever 10 times to stretch cable and seating housing. push back on the actuation arm - if it is not returning fully, this indicates there is too much friction that will need to be corrected for best performance.
- New cable will stretch after initial installation.



A. Pull cable and tighten

INSTALLING AND REMOVING BRAKE PADS

- Take off the pad pin from brake body.
- Remove the pads and pads spring from the upper of the caliper.
- Install new pads and spring assembly into the calipers.
- Reinsert the pad pin and confirm the pads and spring are seated correctly.
- Repeat for other caliper and adjust cable or pad alignment if necessary.



B. How to take of pads and pin

DISC BRAKE BREAK-IN PERIOD

- Disc brakes have a 30 - 40 cycle break-in period to achieve optimal pad seating and performance. Exercise caution for the first 30 - 40 cycles each time you replace the brake pads.

SAFETY CHECK

IMPORTANT!!

Before Every Ride

- Spin Wheel to be sure rotor is undamaged and spins freely.
- Check brake pads thickness - if pads are less 0.8mm, replace!
- Check bolt tension, re-torque if necessary.
- Check cable and housing for fraying, excessive friction or damage.
- Ensure that all cables are secure to frame and /or fork and can not contact tires!!

For questions about setup, usage or general inquiries do not hesitate to contact ZENO
e-mail: service@zeno.tw

ENJOY YOUR RIDE !

ZENO
DRIVEN PERFORMANCE